

An allograft  
developed to  
treat even the  
most complex  
wounds

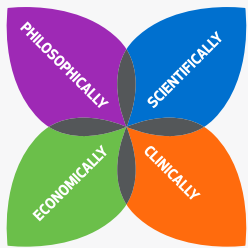




ALLOGRAFT DERMAL MATRIX  
**MESHED**

SomaGen™ Meshed is an acellular human reticular dermal allograft with a unique meshed design that provides a scaffold to support the treatment of a variety of complex wounds.

SomaGen Meshed, and its biocompatible design, provides immediate wound coverage without the need for autologous skin grafting, lowering costs & saving time—all without compromising patient outcomes.



## Different By Design

MTF Biologics is a nonprofit organization that's committed to patients and caregivers, not shareholders. As the leading tissue bank in the world, we're focused on honoring the gift of donation by serving patients and advancing the science of tissue transplantation.

### Philosophically:

- We maximize the gift of donation by constantly researching new tissue forms and clinical needs, leading to innovative new solutions
- The unique lattice design allows for greater surface area coverage without requiring large graft sizes

### Economically:

- Long shelf life at ambient temperature storage
- Saves time and eliminates need for manual meshing equipment in the OR
- Eliminates need for autologous skin graft
- Each pre-meshed graft allows for expansion of up to 150%, maximizing the coverage area of the graft

### Scientifically:

- The only meshed reticular layer of dermal tissue on the market providing integration compatible architecture
- Aseptic tissue processing achieves a level of sterility equivalent to any implantable medical device, without the need for harmful, degrading tissue irradiation
- Open architecture allows for greater cell infiltration and attachment while supporting tissue integration and wound closure

### Clinically:

- Flexible and conformable for various anatomical sites and may be used in deep donor sites
- Meshed pattern allows for improved wound drainage



# How it works: The science behind the mesh

SomaGen Meshed is designed for large and complex wounds. The lattice-based slit design allows the graft to conform and expand based on the wound size and topography.

- Compatible with other common advanced wound modalities
- Large slits ensure wound fluid egress while allowing the patient's own cells to rebuild tissue
- Meshed pattern allows the graft to stretch significantly from its original size, providing flexibility and conformity to the needs of the wound

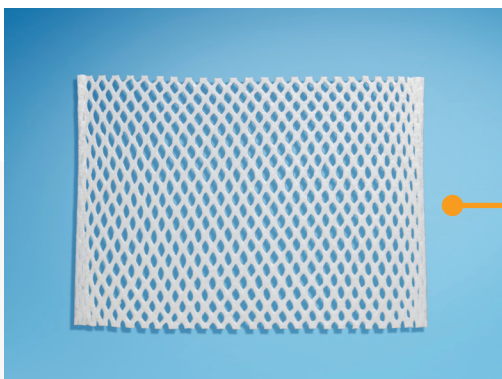
## SomaGen Meshed

# EXPANDS 150%

to accommodate wounds of various sizes



Non-expanded SomaGen Meshed

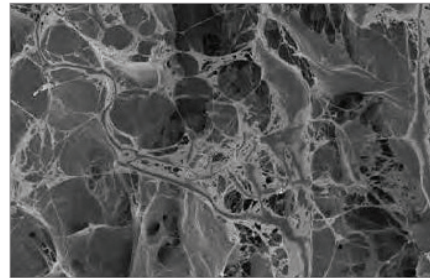


Expanded SomaGen Meshed

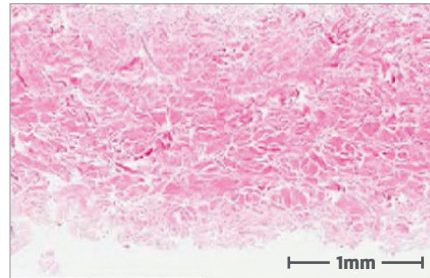
# SomaGen Meshed supports wound closure activities<sup>1</sup>

Reticular dermis, which is the basis for SomaGen Meshed, has a uniform, open microscopic architecture that provides the ideal scaffold for wound closure.

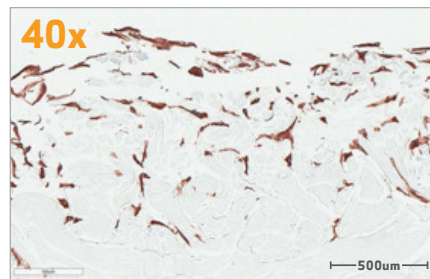
Your patient's own cells proliferate to repopulate the graft and facilitate integration



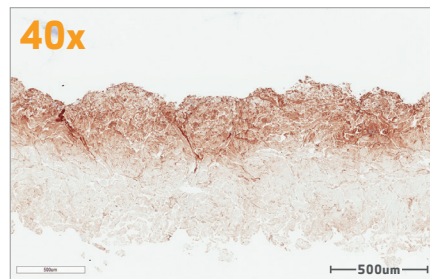
Scanning electron microscopy shows open architecture (allowing for greater cell infiltration)



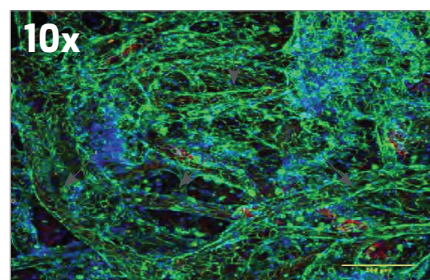
H&E staining shows uniform structure (no sidedness)



IHC staining indicates cell infiltration (50% of thickness on Day 14)



IHC staining shows granulation support (new connective tissue and microscopic blood vessels)



Confocal image shows angiogenesis (new tube formation)

<sup>1</sup> Dasgupta A et al. PRS-GO. 2016.

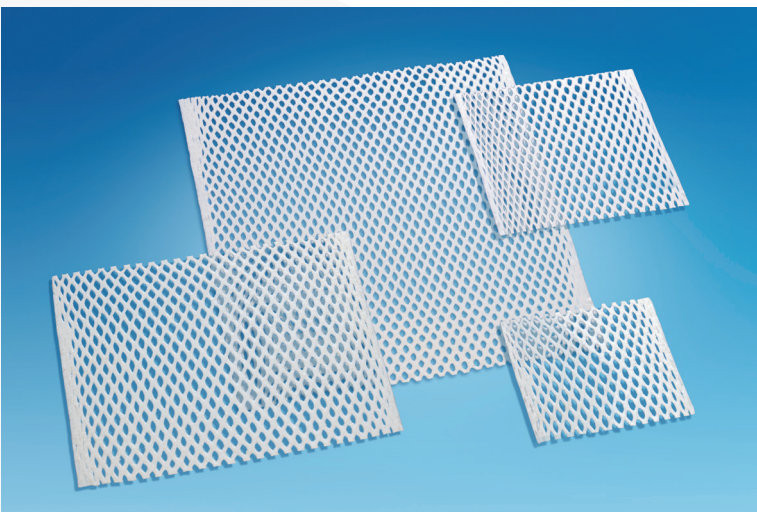
# MTF Biologics is a nonprofit organization dedicated to offering the highest quality tissue solutions, without compromise.

We're driven to advance science through research and dedicated to providing quality tissue for a variety of medical purposes. Since our founding in 1987, close to nine million grafts have been distributed to save and heal countless lives.

## Ordering and Service Information:

ORDER NO.	SIZE (W X L)	AREA WITHOUT EXPANSION	PREDICTED EXPANDED DIMENSIONS (W X L)*	PREDICTED EXPANDED AREA*	UPC CODE
WC 2068	6cm x 8cm	48 sq. cm	8cm x 9cm	72 sq. cm	840045715275
WC 2812	8cm x 12cm	96 sq. cm	10.5cm x 13.5cm	142 sq. cm	840045715282
WC 2115	10cm x 15cm	150 sq. cm	13cm x 17cm	221 sq. cm	840045717378
WC 2325	13cm x 25cm	325 sq. cm	17cm x 28cm	476 sq. cm	840045717385

\*MTF Biologics data on file. Dimensions are based on MTF Biologics R&D data on file and may slightly differ due to natural graft-to-graft variability.



### MTF BIOLOGICS CUSTOMER SERVICE

[mtfcs@mtf.org](mailto:mtfcs@mtf.org)

**1-800-433-6576**

### MTF BIOLOGICS REIMBURSEMENT SUPPORT

The Pinnacle Health Group, Inc.  
[mtf@thepinnaclehealthgroup.com](mailto:mtf@thepinnaclehealthgroup.com)

**1-866-369-9290**